

Fixing system for thin fronts – EXPANDO T

Planning

Area of application – EXPANDO T

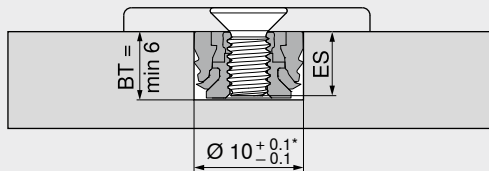
EXPANDO T is suitable for fixing Blum fittings to thin front materials in furniture manufacturing

With sufficient stability and strength, front materials of 8 mm thickness and above may be used

Area of application and assembly recommendation

Materials tested by Blum	Transverse tensile strength (N/mm ²)	Min. tightening torque (Nm)
Chipboard	> 0.40	1.5
MDF	> 0.60	1.5
HDF		2
HPL		2
Mineral composites		2
Nero Assoluto natural granite stone		3
Quartz composite artificial stone		3
Ceramic plates		3

Drilling depth | screw selection – EXPANDO T



Screws with M4 thread have to be used for EXPANDO T single

The lowest possible drilling depth should be selected for the single dowel, depending on the screw length

BT Drilling depth

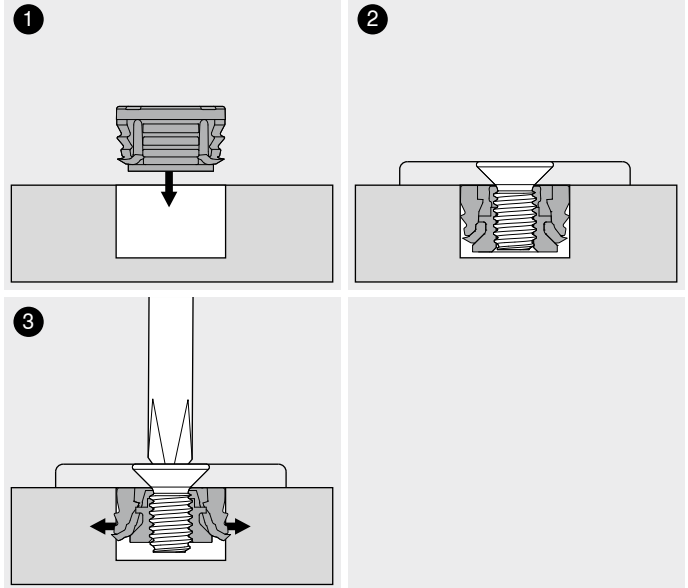
ES Screw penetration depth

ES min. = 4 mm

ES max. = BT – 0.5 mm

* Stone and ceramic +0.2/–0.1 mm

Assembly – EXPANDO T



Limitation of liability

Blum accepts no liability for the use of EXPANDO T in combination with materials not listed or fittings from other manufacturers

It is recommended that the assembly be carried out by an experienced furniture manufacturer

Reference pages

AVENTOS HS – up and over lift system

30

AVENTOS HL – lift up

36

Overview

43

CLIP top BLUMOTION | CLIP top – hinges

70

LEGRABOX

190

Overview

257

Front/base stabiliser for thin fronts

239

More on our new EXPANDO T fixing system

Short URL

www.blum.com/EXPANDO_T_3



Assembly, removal and adjustment

Short URL

www.blum.com/a720

